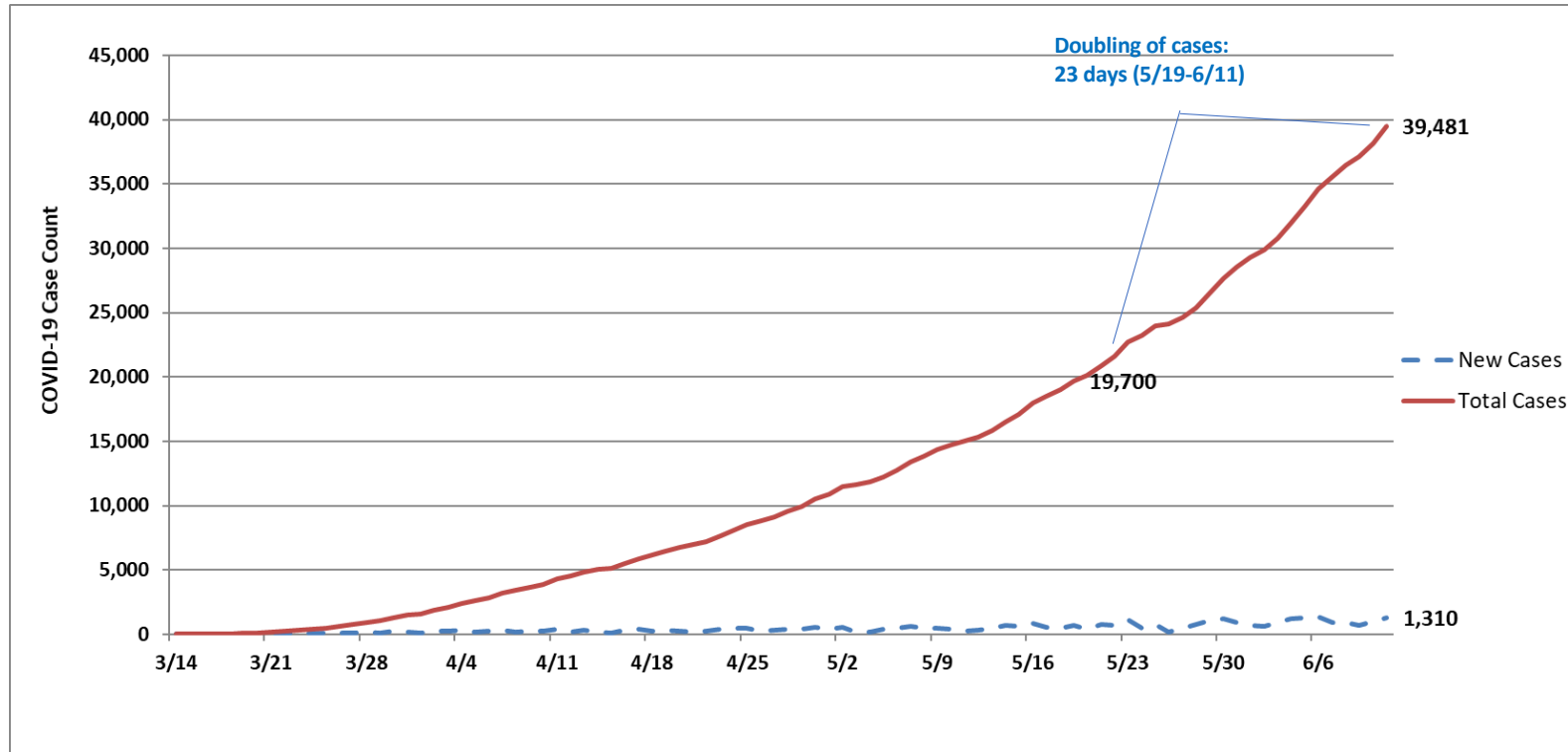


NORTH CAROLINA HEALTHCARE ASSOCIATION STATEWIDE SUMMARY

Date: June 10, 2020

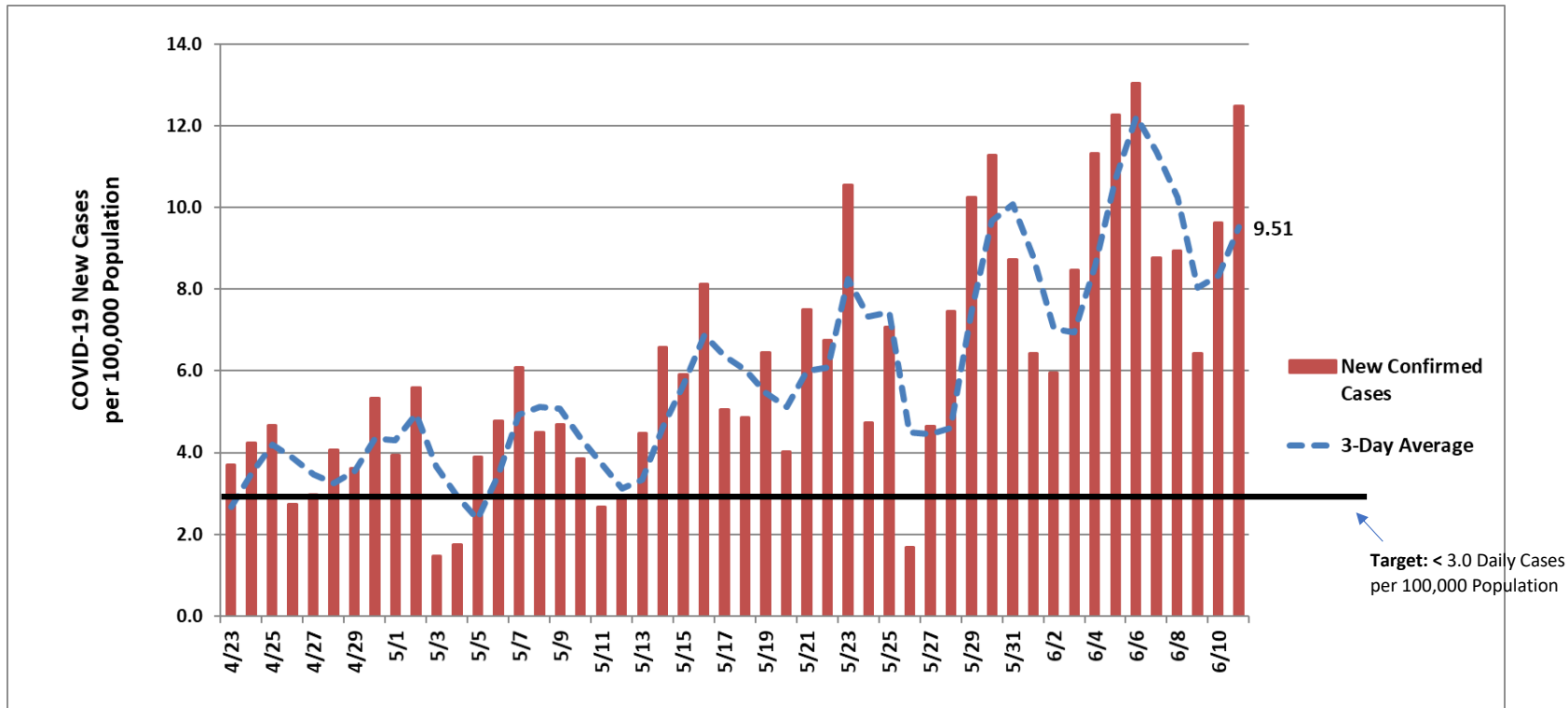
COVID-19 Daily NC Summary



Source: NC DHHS. Data current as of 6/11/2020.



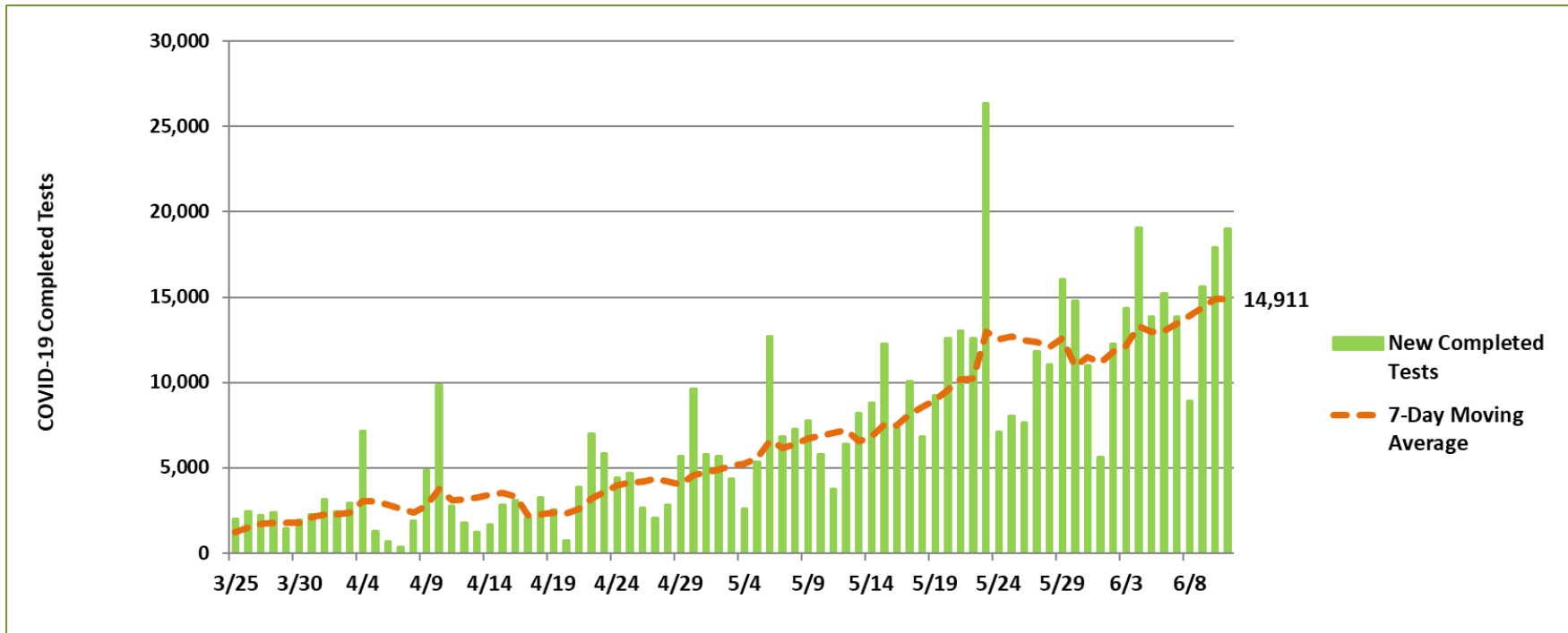
NC New Confirmed COVID-19 Cases per Capita



Source: NC DHHS. Data current as of 6/11/2020.

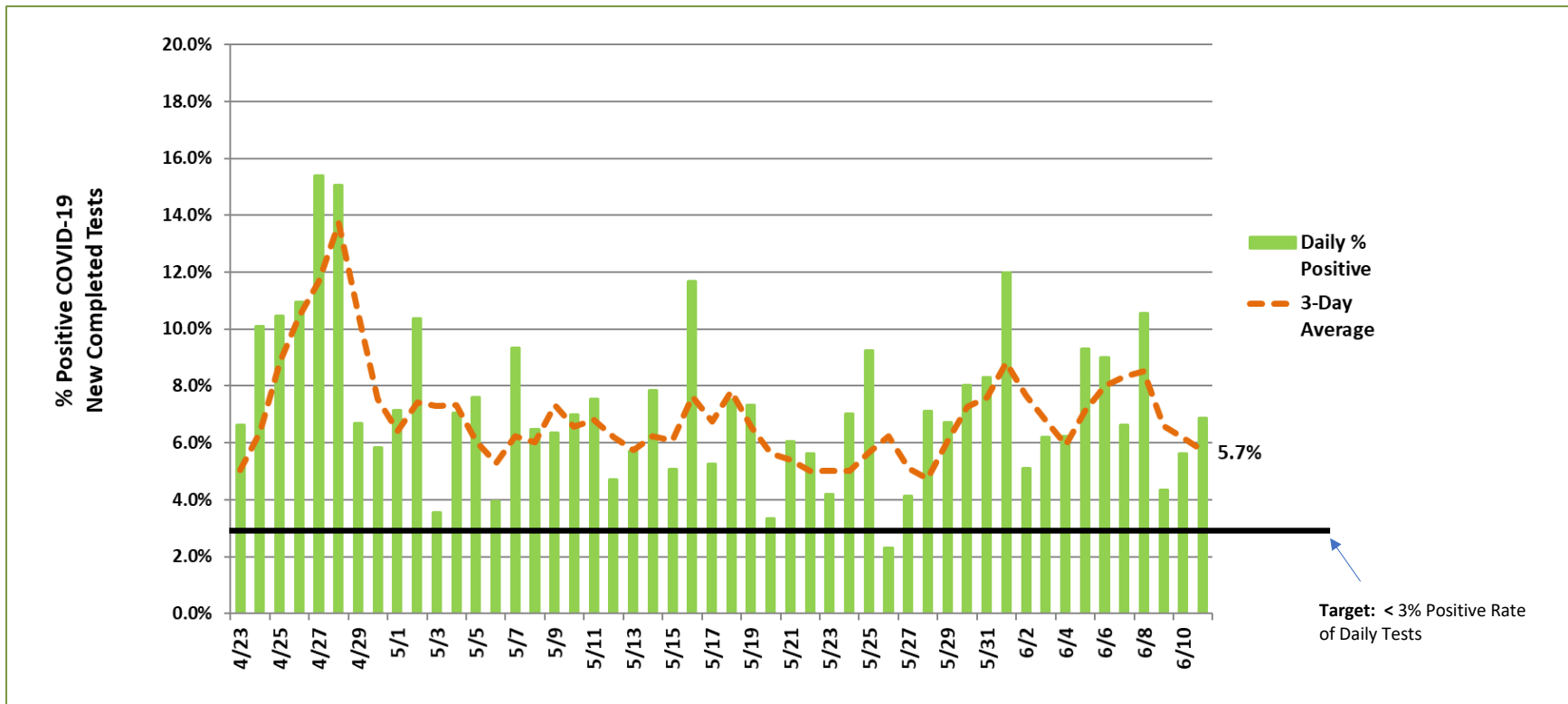


Daily Tracker of Completed COVID-19 Testing in NC



Source: NC DHHS. Data current as of 6/11/2020.

% Positive Rate of COVID-19 Testing in NC



Source: NC DHHS. Data current as of 6/11/2020.



NORTH CAROLINA MEDICAL SURGE SURVEY

Date: June 10, 2020

Link to complete survey:

<https://surveymax.dhhs.state.nc.us/MedicalSurgeSurvey>

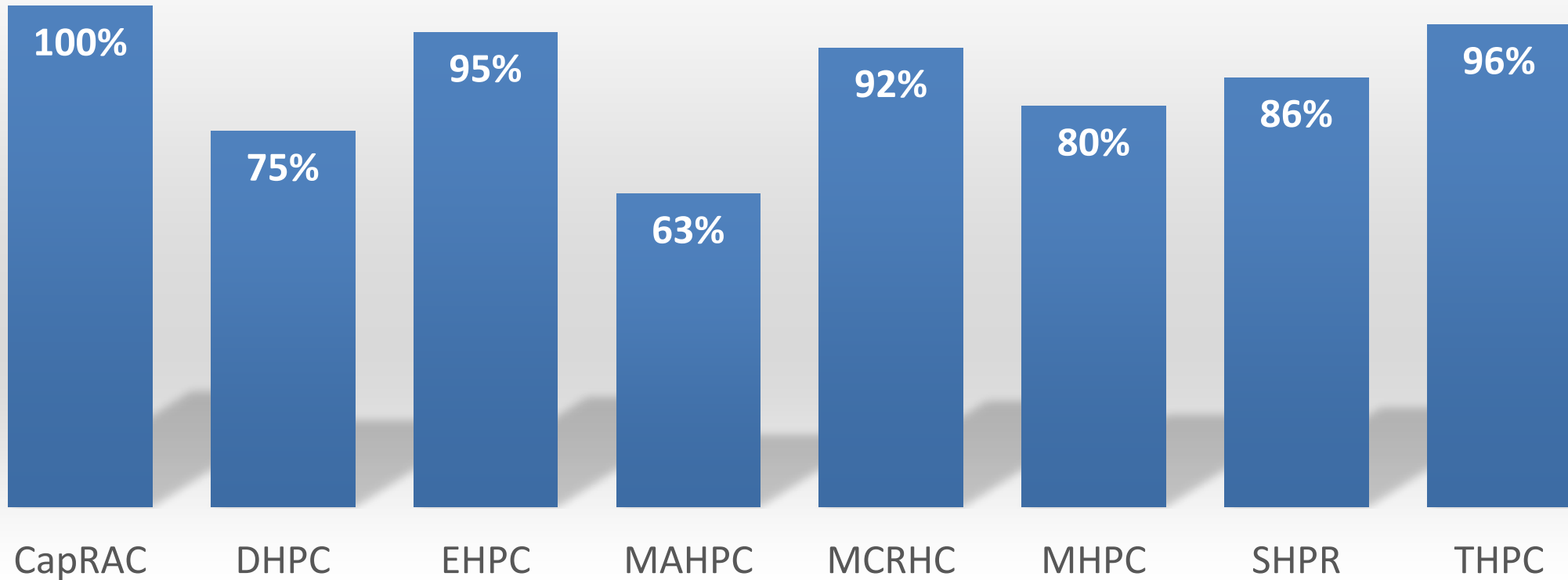
INFORMATION ABOUT REPORT

- This report is meant to provide Regional & Statewide Situational Awareness regarding Hospital Capacity within North Carolina
- Enclosed in this report is aggregated Healthcare Coalition Regional data collected from individual hospitals across North Carolina regarding the medical surge capacity. This information represents the most updated information provided to the North Carolina Healthcare Preparedness Program as of June 10, 2020
- At the end of this report are the hospitals represented by Healthcare Coalition Regions & Associated Contact information should you have questions.

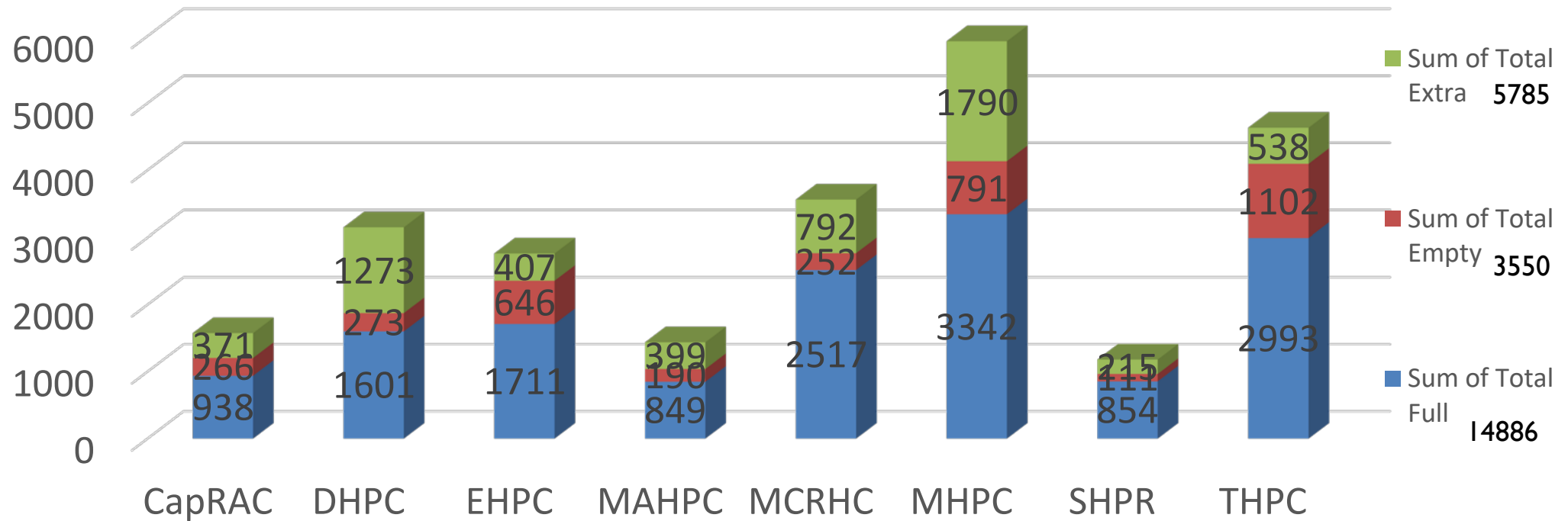
STATEWIDE STATISTICS

- Percentage of Hospitals Reporting Statewide = 86%
- Total Number of COVID-19 Positive Patients Admitted in Hospital = 812
- Number of Fatalities Related to COVID-19 in Past 24 Hours = 9
- Total Number of Inpatient Hospital Beds
 - Full Beds = 14805
 - Empty Beds = 3631
 - Extra Beds = 5785
- 2019 Licensed ICU Bed Capacity = 3223
- Total ICU Beds Available = 415
- Total ICU Beds Full = 1712
- Total Number of Patients on Ventilator (not specific to COVID 19) = 875
- Total Number of Ventilators in Hospitals = 3156
- 2019 Licensed Acute Care Beds = 21222

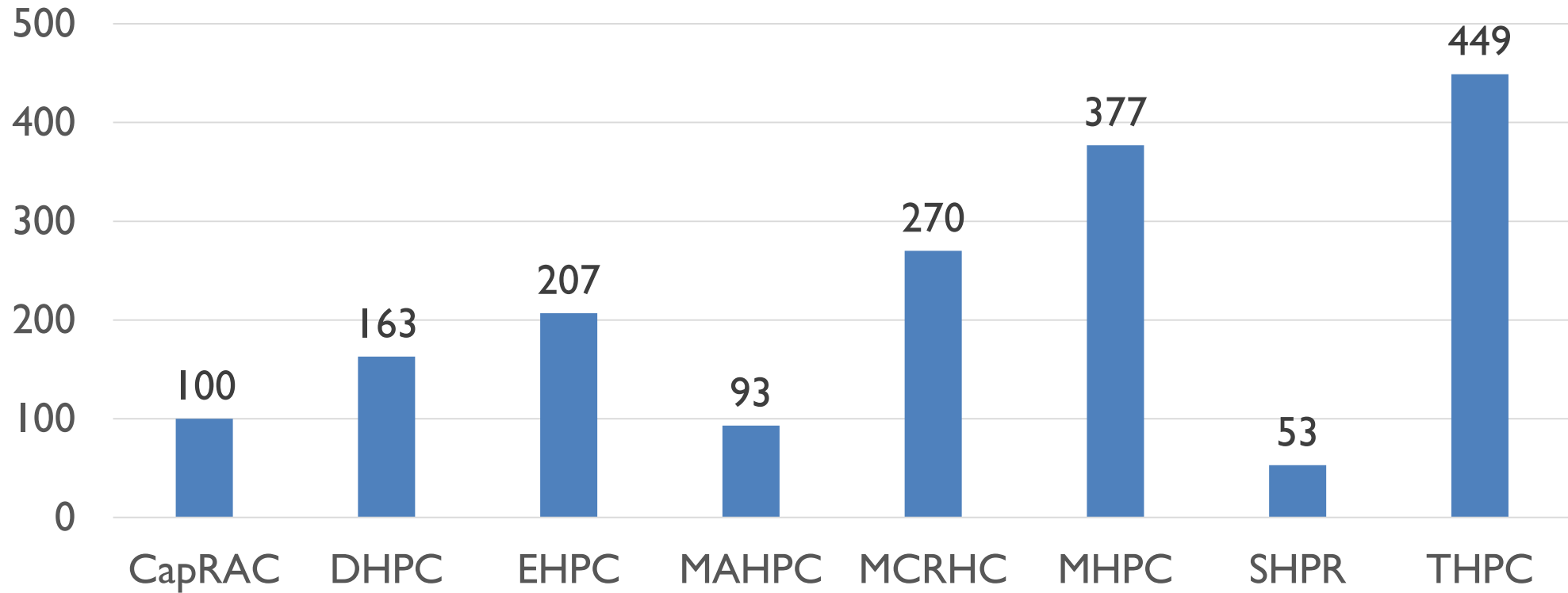
Percentage of Hospitals Reporting by Region



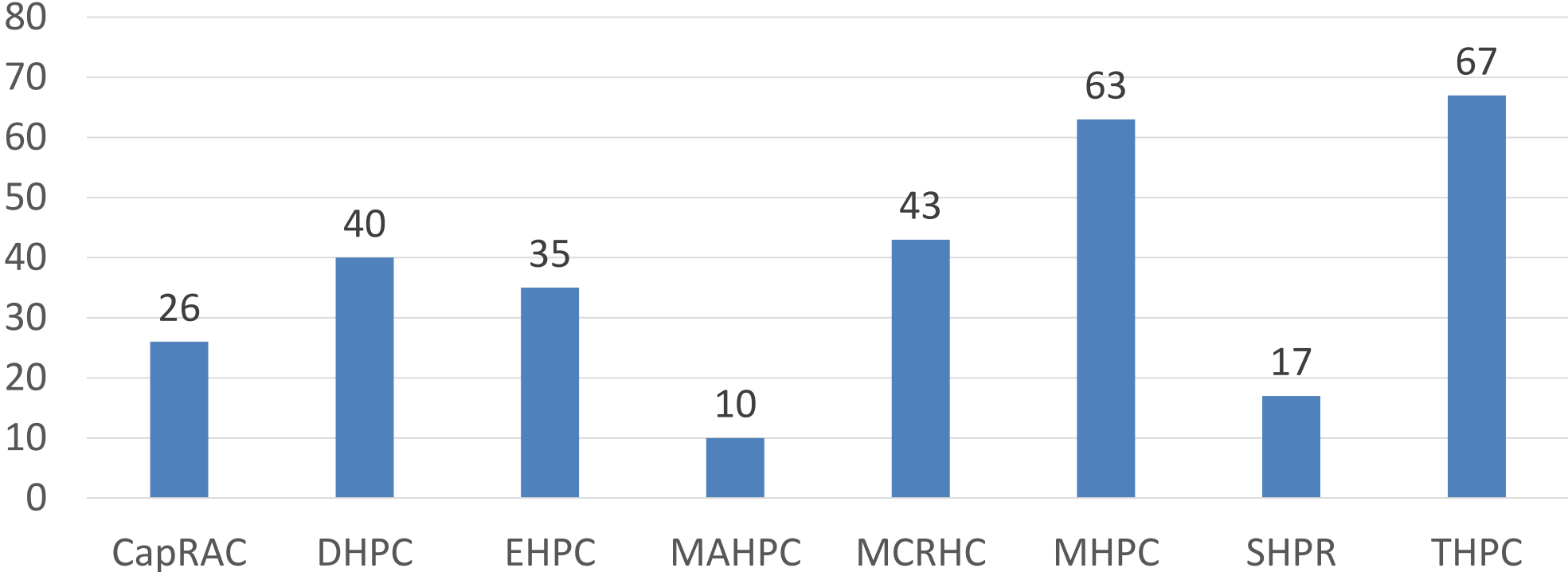
Total Full Beds vs. Empty Beds vs. Extra Beds



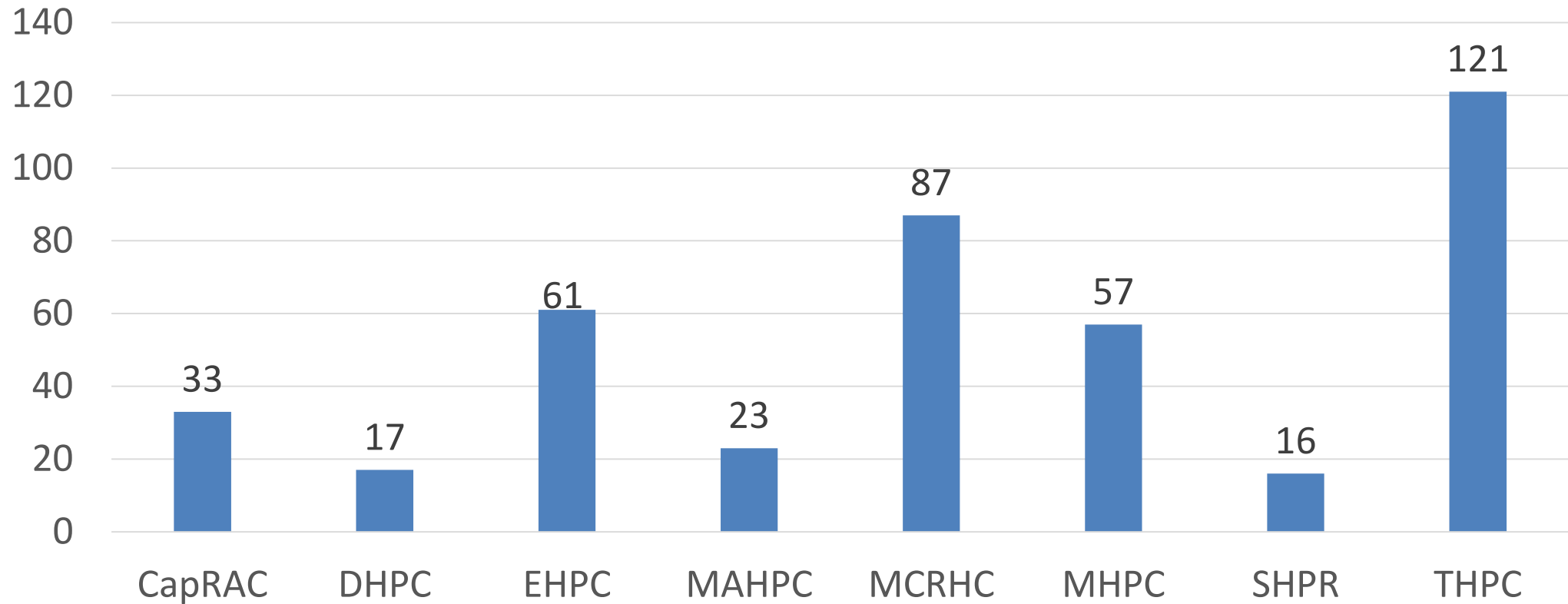
Total Full ICU Beds



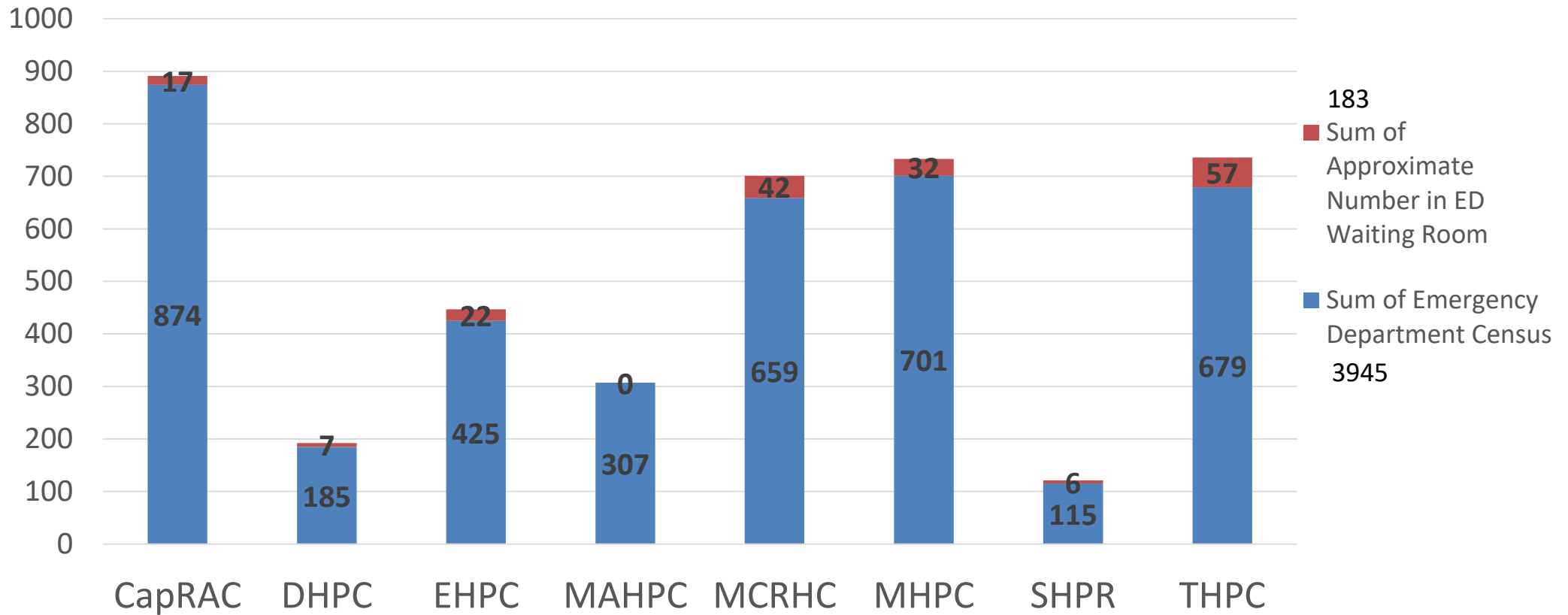
ICU - COVID Positive Patients



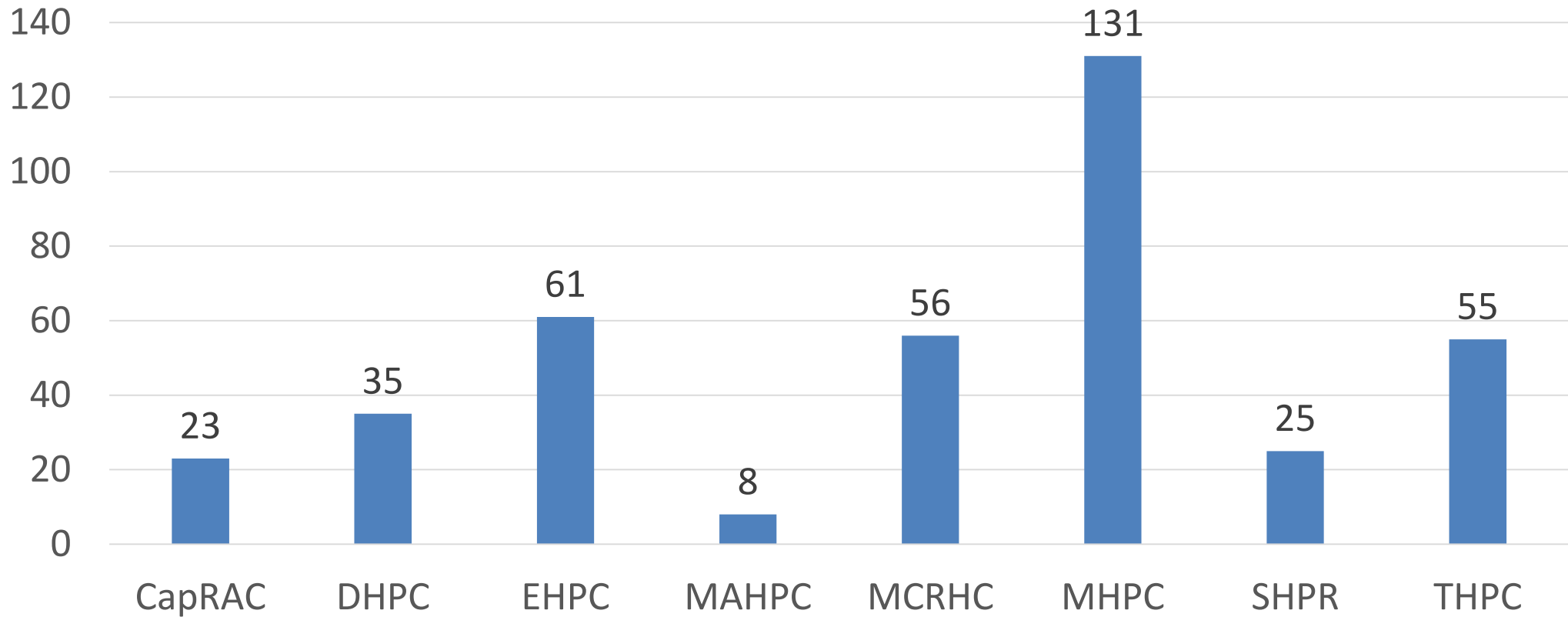
Total Empty ICU Beds



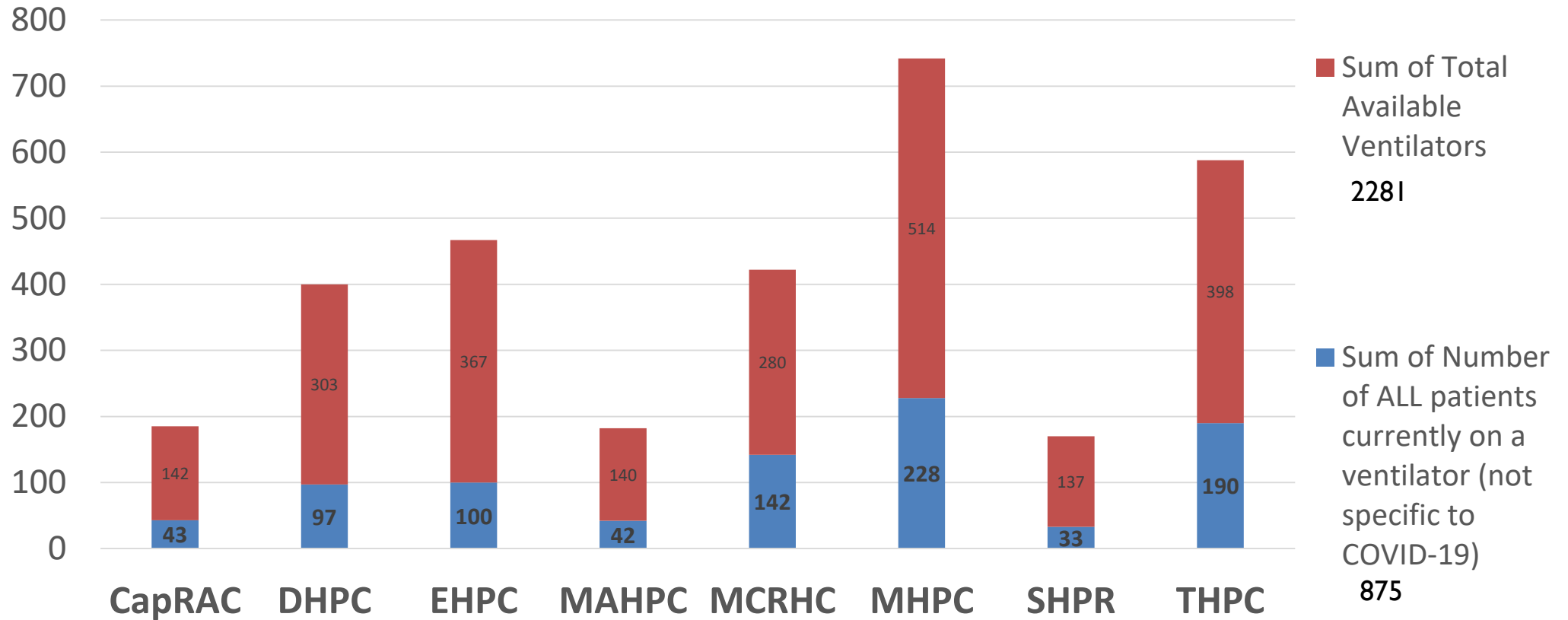
Total Emergency Department Census vs. Waiting Room Numbers



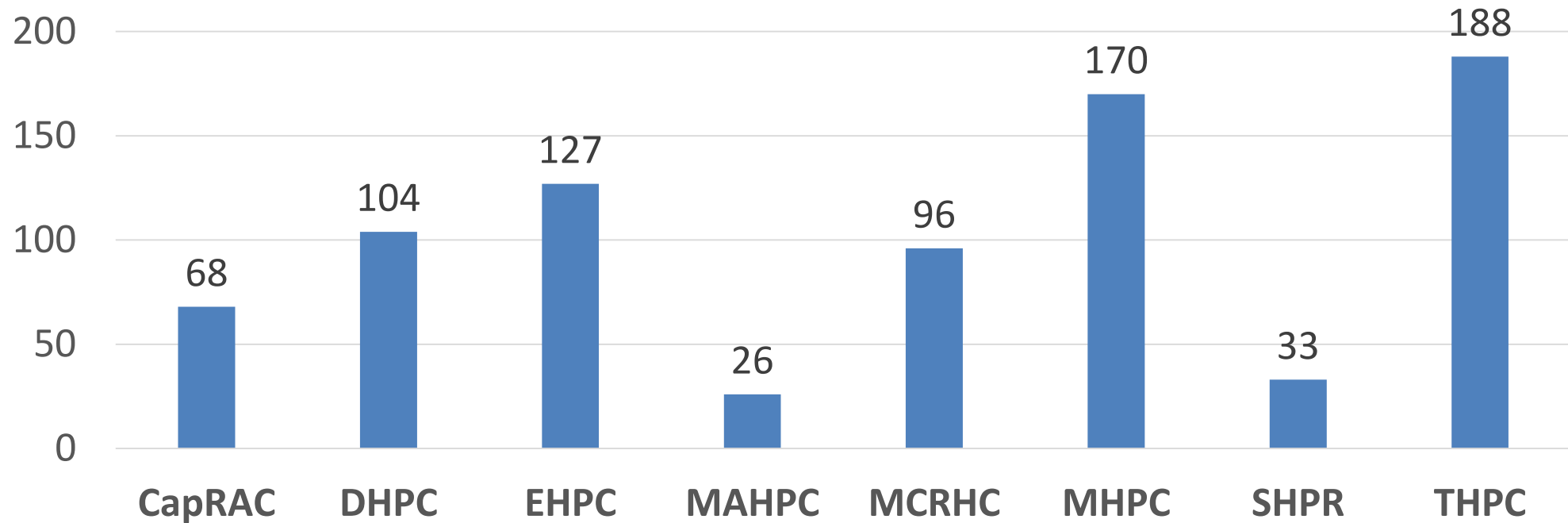
Total Behavioral Health Holds in Hospitals



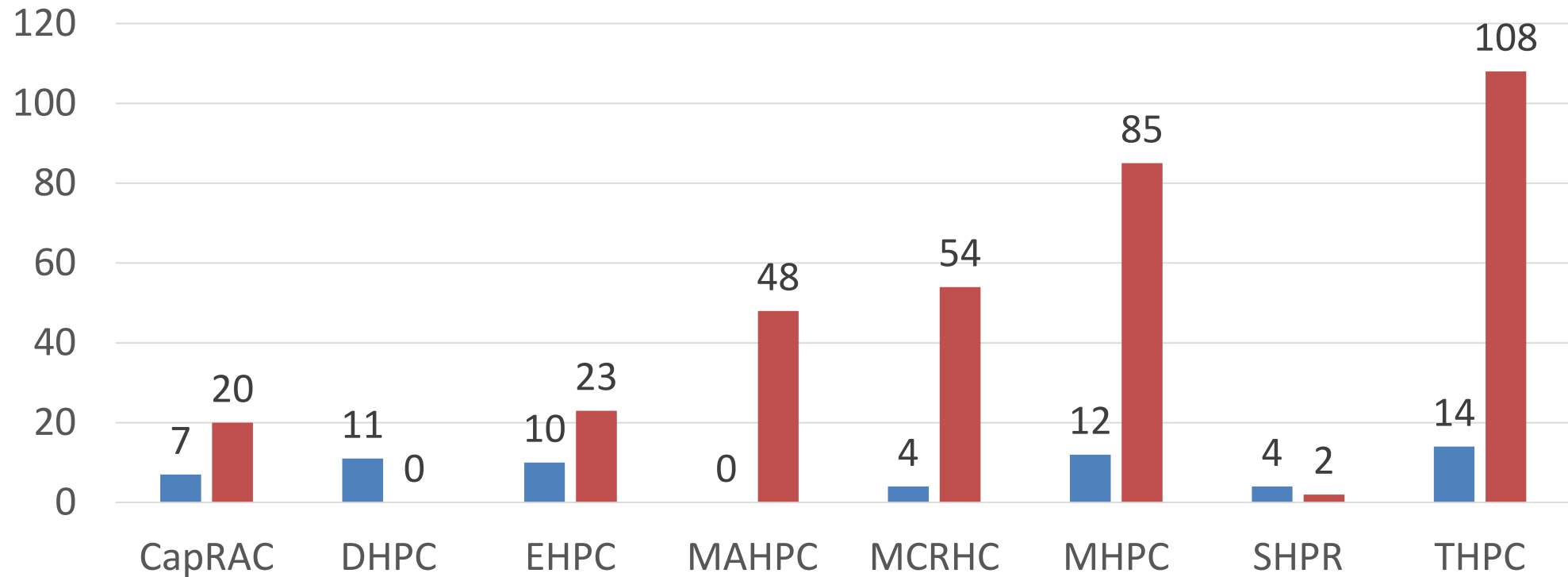
Total number of patients on Ventilator (not specific to COVID-19) v. Total Available



Total Number of COVID-19 Positive Patients Admitted In Hospital



Confirmed/Suspected Patients Admitted Past 24 Hours



CAPRAC HEALTHCARE COALITION ACUTE CARE HOSPITALS

Janis Brown - janisbrown@wakemed.org

- Betsy Johnson Hospital (Harnett Health)
- Central Carolina Hospital
- Central Harnett Hospital (Harnett Health)
- Johnston UNC Healthcare – Clayton
- Johnston UNC Healthcare – Smithfield
- Maria Parham Franklin
- WakeMed Cary Hospital
- WakeMed Raleigh Hospital

DUKE HEALTHCARE PREPAREDNESS COALITION ACUTE CARE HOSPITALS

David Marsee - david.marsee@duke.edu

- Duke Raleigh Hospital
- Duke Regional Hospital
- Duke University Hospital
- Durham VA
- Granville Health System
- Maria Parham Medical Center
- Person Memorial Hospital
- Southeastern Regional Medical Center

EASTERN HEALTHCARE PREPAREDNESS COALITION ACUTE CARE HOSPITALS

Chris Starbuck - CStarbuc@vidanthealth.com

- CarolinaEast Medical Center
- Carteret Health Care
- Martin General Hospital
- Nash UNC Health Care
- Onslow Memorial Hospital
- Sentara Albemarle Medical Center
- The Outer Banks Hospital
- UNC Lenoir
- UNC Wayne
- Vidant Beaufort Hospital
- Vidant Bertie Hospital
- Vidant Chowan Hospital
- Vidant Duplin Hospital
- Vidant Edgecombe Hospital
- Vidant Medical Center
- Vidant - North
- Vidant Roanoke-Chowan Hospital
- Washington Hospital
- Wilson Medical Center

METROLINA HEALTHCARE PREPAREDNESS COALITION ACUTE CARE HOSPITALS

Hannah Gompers - hannah.gompers@atriumhealth.org

- Atrium Health - Cabarrus
- Atrium Health - Main
- Atrium Health - Pineville
- Atrium Health - Stanley
- Atrium Health - Union
- Atrium Health - University
- Atrium Health - Waxhaw
- CaroMont Regional Medical Center
- Lake Norman Regional Medical Center
- Novant Health Huntersville Medical Center
- Novant Health Matthews Medical Center
- Novant Health Mint Hill Medical Center
- Novant Health Presbyterian Medical Center
- Scotland Memorial Hospital

MID CAROLINA REGIONAL HEALTHCARE COALITION ACUTE CARE HOSPITALS

Randy Hoffman - randy.hoffman@unchealth.unc.edu

- Alamance Regional Medical Center
- Cape Fear Valley Hoke Hospital
- Cape Fear Valley Medical Center
- FirstHealth Moore Regional Hospital - Hoke Campus
- FirstHealth Montgomery Memorial Hospital
- FirstHealth Moore Regional Hospital
- FirstHealth Richmond Hospital
- Highsmith-Rainey Specialty Hospital
- Sampson Regional Medical Center
- UNC Chatham Hospital
- UNC Hillsborough Hospital
- UNC Medical Center
- UNC Rex Hospital
- Womack Army Medical Center

MOUNTAIN AREA HEALTHCARE PREPAREDNESS COALITION ACUTE CARE HOSPITALS

Mark Stepp - mark.stepp@HCAHealthcare.com

- Angel Medical Center
- Blue Ridge Regional Hospital
- Cannon, Jr Memorial Hospital
- Cherokee Indian Hospital
- Erlanger Murphy Medical Center
- Harris Regional Hospital
- Haywood Regional Medical Center
- Highlands-Cashiers Hospital
- Mission Health System
- Mission Hospital McDowell
- Pardee Memorial Hospital
- Park Ridge Health
- Rutherford Regional Health System
- St. Luke's Hospital
- Swain Community Hospital
- Transylvania Regional Hospital

SOUTHEASTERN HEALTHCARE PREPAREDNESS REGION ACUTE CARE HOSPITALS

Hans Edwards - Hans.Edwards@NHRMC.org

- Cape Fear Valley Bladen County Hospital
- Columbus Regional Healthcare System
- Doshier Memorial Hospital
- Naval Medical Center Camp Lejeune
- New Hanover Regional Medical Center
- Novant Health Brunswick Medical Center
- Pender Memorial Hospital

TRIAD HEALTHCARE PREPAREDNESS COALITION ACUTE CARE HOSPITALS

Mike Brienza - mbrienza@wakehealth.edu

- Alleghany Memorial Hospital
- Ashe Memorial Hospital
- Caldwell UNC Health Care
- Catawba Valley Medical Center
- Cone Health Annie Penn Hospital
- Cone Health The Moses H Cone Memorial Hospital
- Cone Health Wesley Long Hospital
- Davis Regional Medical Center
- Frye Regional Medical Center
- Hugh Chatham Memorial Hospital
- Iredell Memorial Hospital
- LifeBrite Community Hospital of Stokes
- Northern Hospital of Surry County
- Novant Health Forsyth Medical Center
- Novant Health Kernersville Medical Center
- Novant Health Rowan Medical Center
- Novant Health Thomasville Medical Center
- Novant Health-Clemmons Medical Center
- Randolph Hospital
- UNC Rockingham Health Care
- Wake Forest Baptist Health - Davie Medical Center
- Wake Forest Baptist Health - Lexington Medical Center
- Wake Forest Baptist Hospital
- Watauga Medical Center
- Wake Forest Baptist Health - High Point Medical Center
- Wake Forest Baptist Health - Wilkes Regional Medical Center