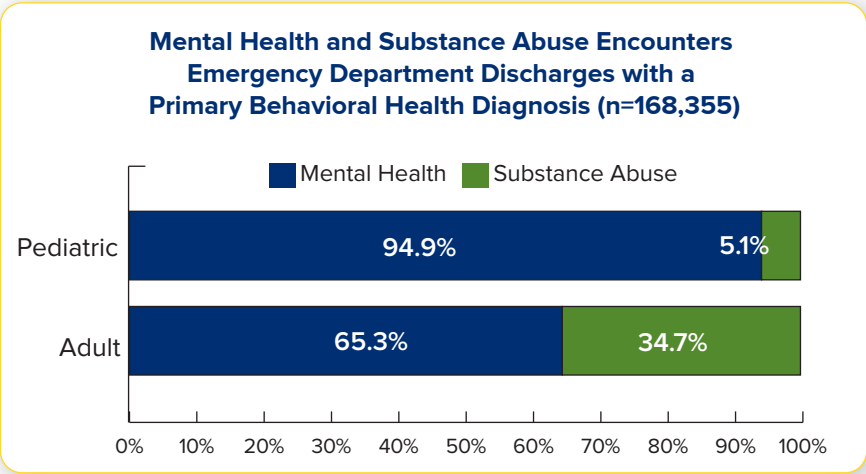


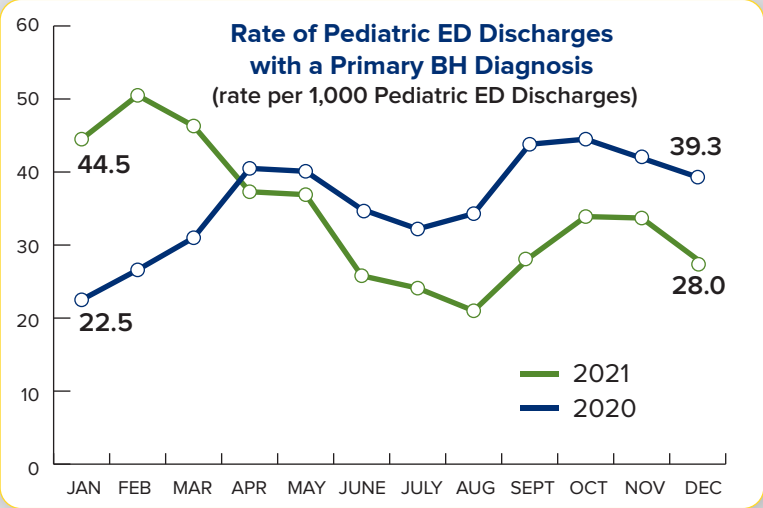
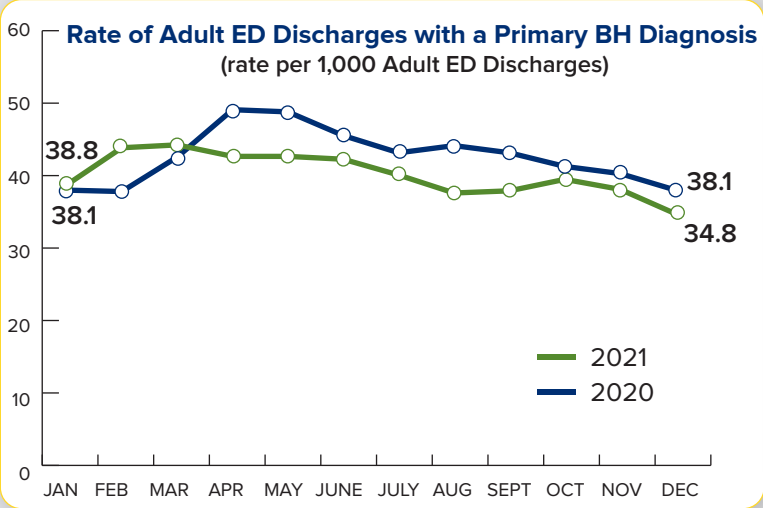
Behavioral Health Emergency Department Utilization Dashboard

In 2021, **4%** of Emergency Department (ED) visits were for behavioral health. Of those 168,355 visits:

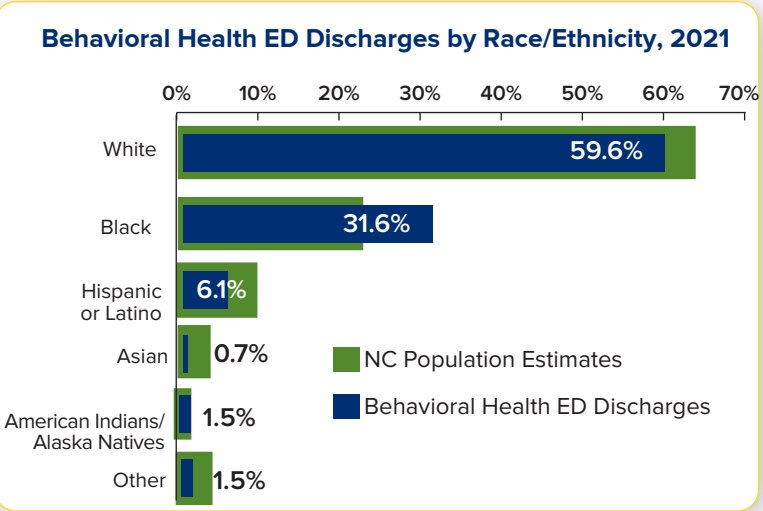
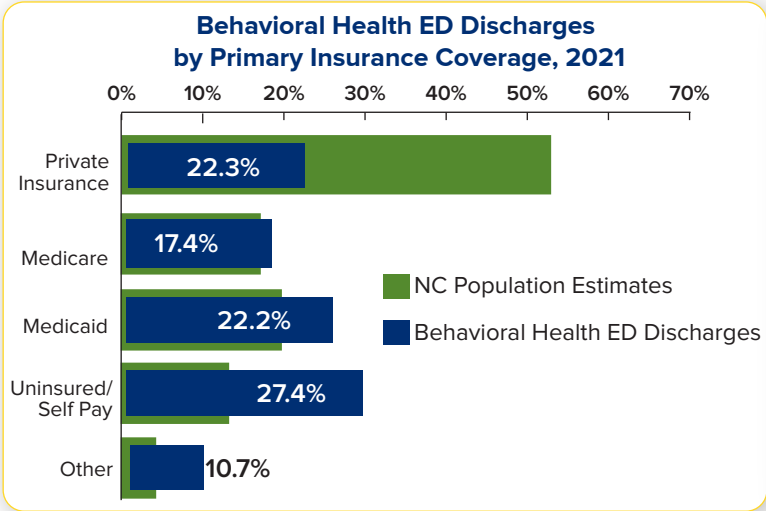


Of those who came to the ED, **21% of adults** and **12% of kids** received inpatient care for their behavioral health condition.

Patients seeking ED care for behavioral health decreased slightly in 2021, compared to 2020.



Hospital EDs see a disproportionate number of patients who are uninsured, receive Medicaid and are Black.



It takes behavioral health patients longer to be discharged from the ED than other patients.

For adults the median time to discharge is **1.2 times** longer, and for kids it's **2 times** longer.

